



Ergonomic Profiling

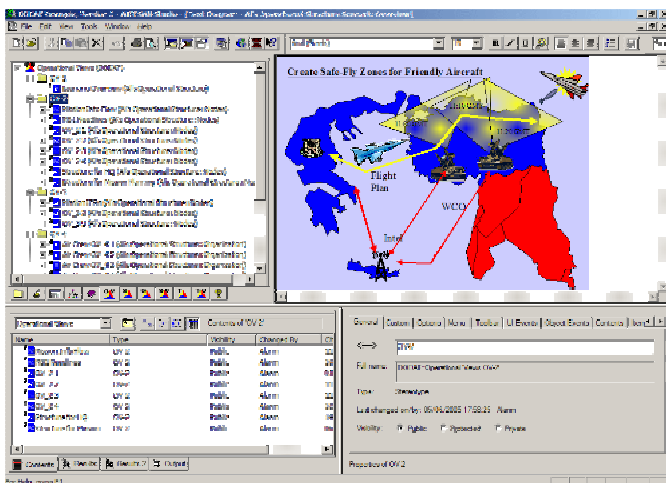
Features:

- ✓ **Scripts** can be added directly to models and invoked in-process.
- ✓ **Add new explorer panes**, to display domain-specific elements.
- ✓ **Customize browser icons** based on stereotype UML elements.
- ✓ **Add new diagram types** based on stereotyped UML diagrams.
- ✓ **Extend existing profiles**, using an open and extensible architecture.

UML profiles are an important mechanism to adapt the standard UML to meet different needs in a fully conformant way. Using stereotypes and tag definitions, a profile architect can extend the UML metamodel for different platforms (such as Ada or C++) or domains (such as real-time or business process modeling).

Using Ergonomic Profiling, ARTiSAN Studio will take on new menus and explorer windows based on the UML profiles the user is working with. This includes new icons, item types, and diagrams. If you imagine the UML metamodel as the sponge of a cake, it allows a profile architect to add icing and candles to create an environment tailored to your specific modeling requirements. There are many cakes you can bake with a UML core. At the simplest level you can to hide information about the base type and apply new icons to stereotyped model elements. It's also surprisingly easy to create new explorer panes for browsing items. At the more advanced level, you can add new diagrams and override context menu commands.

The level of UML-compliant extensibility provided by Ergonomic Profiling is unmatched in the industry, enabling the provision of truly compelling environments tailored to real needs. What's more, with Ergonomic Profiles your developers are still working with industry-standard UML concepts and models.



ARTiSAN Studio will take on new menus and explorer windows based on the UML profiles you are working with, e.g. DoDAF

BENEFITS

Enhanced ergonomics and user experience

Developers can interact more intuitively with domain and discipline specific elements that have their own icons, symbols and diagrams.

Aids stakeholder and customer buy-in

Enhance the communication of ideas to external stakeholders and non-technical audiences by replacing stick men and boxes with trains, planes, and automobiles.

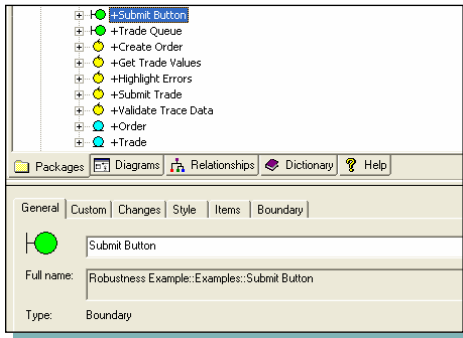
Enhanced workflow using new browsers

By adding new explorer panes you can enhance the workflow for navigating elements and their relationships, utilising the power of the active data dictionary.

Fit for your purpose and domain needs

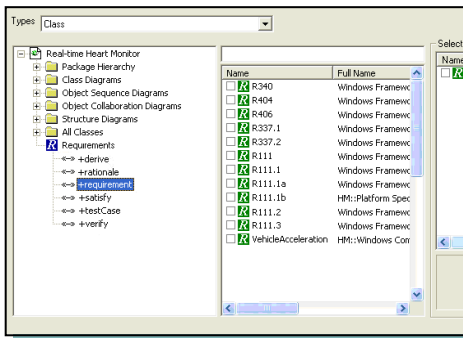
The mechanisms are open and extensible, providing you with a suite of capabilities for achieving your specific aims. The sky is the limit.

1. Work with domain-specific types in the browser



- ✓ Profile architects can choose to override the base type name and icon.
- ✓ This example shows robustness analysis types, rather than classes.

3. Improved workflow for navigating stereotyped elements



- ✓ Selection dialogs will automatically support filtering based on stereotypes in the profile.
- ✓ This speeds up your ability to find the things you want.

INTERNATIONAL

Suite 701, Eagle Tower
Montpellier Drive
Cheltenham
GL50 1TA, UK
Phone: +44 (0)1242-229300
Fax : +44 (0)1242-229301
Email : info.uk@artisansw.com

Eupener Str. 135 - 137
50933 Cologne
Germany
Phone: +49-221-485-2260
Fax : +49-221-485-2261
Email : info.de@artisansw.com

THE AMERICAS

16055 SW Walker Rd, #422
Beaverton
OR 97006-4942
USA
US Toll Free: +1-888-511-7975
Phone: +1-503-296-2281
Fax : +1-503-244-1443
Email : info.us@artisansw.com

Other features:

- ✓ Requires no additional licensing, works with ARTiSAN Studio.
- ✓ Extensibility features such as icons and browsers can be easily added to UML profiles you have already created.
- ✓ Out-of-the-box profiles will be supported for a specific domains, e.g. DoDAF.
- ✓ Training is recommended and available to help you engineer the best profiles to meet your own specific needs.

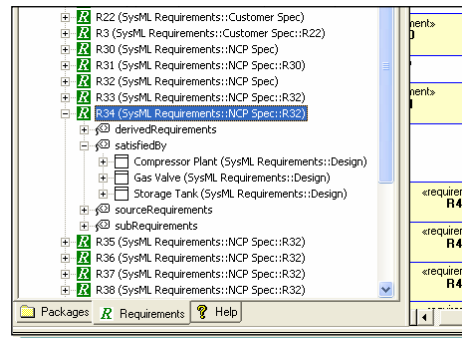


About ARTiSAN Software Tools

ARTiSAN Software Tools is a leading supplier of innovative software modeling solutions that accelerate the development of real-time systems, giving development teams the "fastest path to the right product". ARTiSAN is a practical partner offering easy-to-adopt, down-to-earth solutions that enable teams responsible for designing real-time systems to complete them on schedule and within budget. ARTiSAN is the only company today offering flexible, practical tools that facilitate communication throughout an entire development team, helping them visualize, design and validate systems before implementation, and then simplify implementation with code generation and component re-use. ARTiSAN Software Tools Inc., founded in March 1997, is privately held with headquarters in Portland, Oregon and Cheltenham, UK. The company has regional offices and distributors throughout the world.

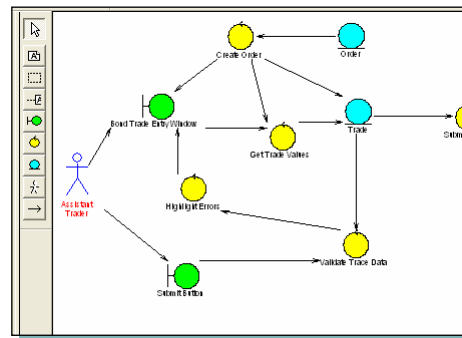
© 2005 Artisan Software Tools. All trademarks used in this publication are the property of their respective holders.

2. Create new browsers for stereotyped elements



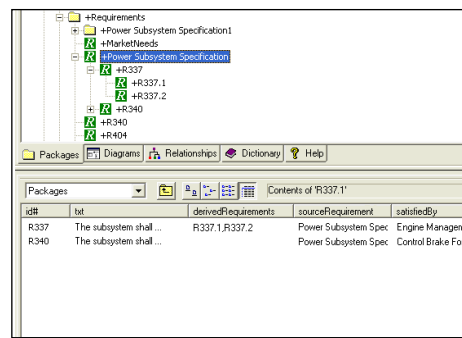
- ✓ New explorer panes can be added to show profile-based elements.
- ✓ For example a browser for SysML requirements and the model elements they relate to.

4. Create new diagram types to work with



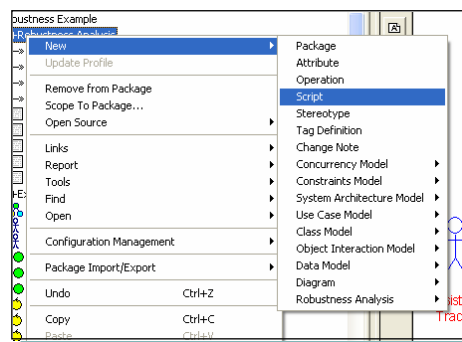
- ✓ Profile architects can add new diagrams with specific behavior and rules.
- ✓ This example shows a diagram for Jacobson's robustness analysis.

5. Putting the information where it's needed



- ✓ Even the contents pane can be changed, based on the element that is selected.
- ✓ For example, the tabular data specific to SysML requirements.

6. Customize behavior using scripts



- ✓ ARTiSAN Studio now supports in-model scripting.
- ✓ Using Scripts you can add things to the menus and override behaviors such as double-click and diagram on-drop.