



DoDAF Profile

Features:

- ✓ **Repository-based data dictionary**, ensuring consistency across views
- ✓ **DoDAF browsers and diagrams**, with icons, toolbars and menus
- ✓ **Derives views and reports** based on existing model data
- ✓ **Distribution of models**, via XML, XML or hard copy
- ✓ **Open and Extensible**, through Profile customization and Scripts
- ✓ **Mature third-party integrations** e.g. to DOORS® and CM tools

The Department of Defense Architectural Framework (DoDAF) specifies a common approach for describing, presenting, and comparing DoD enterprise architectures. It describes a set of 26 products to ensure uniformity and standardization in the documentation and communication of defense architectures.

With its support for UML 2.0 and SysML, ARTiSAN Studio is the market-leading tool for systems engineering and has a strong customer referral list within the Aerospace and Defense industry. The DoDAF profile extends ARTiSAN Studio to provide an environment in which the entire range of DoDAF products can be modeled in a single repository, ensuring architectural consistency and completeness across all the DoDAF views. ARTiSAN's robust client-server technology scales to any configuration, whether you are working on a notebook or large multi-user/multi-site configuration. The active dictionary enables the maintenance of all the DoDAF entities and diagrams and includes the unique ability to embed rich text references to create rich, navigable, and self-maintaining architectures. You can describe DoDAF compliant architectures using DoDAF diagrams, icons and symbols. This is built upon industry-leading UML 2.0/SysML technology, enabling you to take advantage of ARTiSAN Studio's pedigree as a robust and feature-rich platform.

Although the DoDAF profile is an out-of-the-box solution, you're not constrained to the mapping. Using ARTiSAN Studio's unique Ergonomic Profiling, the existing mapping can be customized to suit your specific requirements.

B E N E F I T S

Build models, rather than draw diagrams

Capture all DoDAF products in a single maintainable repository, ensuring consistency and completeness across the operational, systems and technical views.

Aids stakeholder and customer buy-in

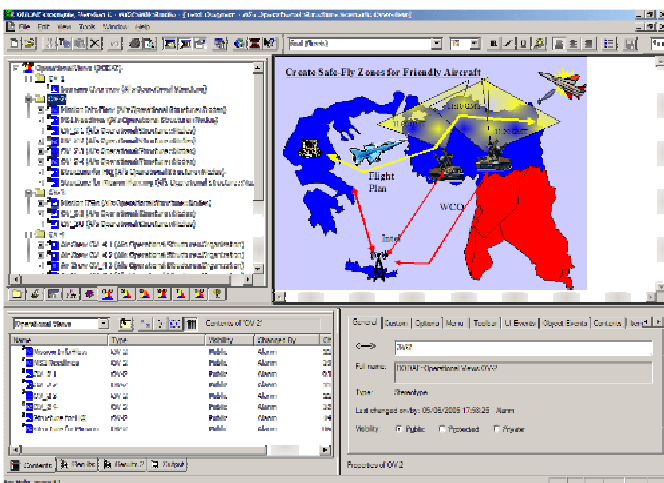
Improve communication between technical and non-technical stakeholders by using DoDAF specific icons, diagrams and graphics.

Scalability advantages of a multi-user repository

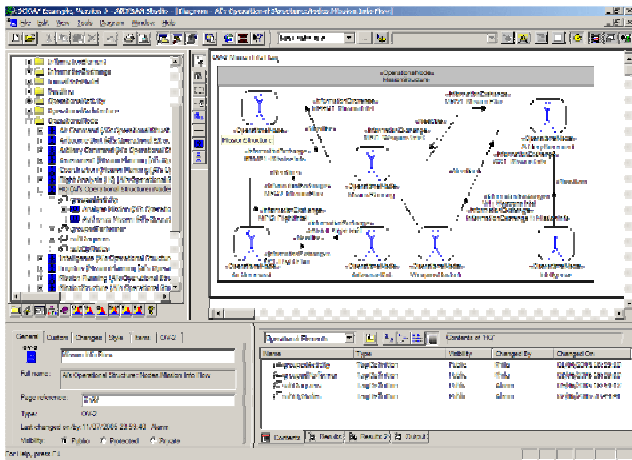
Confidently deploy ARTiSAN Studio on projects regardless of size, from single user to large multi-user/multi-site project teams.

Flow-down into system implementation

Resolve major logistical headaches by creating the products needed to communicate effectively with project sponsors and improve flow down to system implementers.



Leverage the power of a robust and usable multi-user repository for both DoDAF and non-DoDAF deliverables.



Capture DoDAF information using DoDAF, rather than UML, notation and diagrams.

FEATURES

Repository-based data dictionary

ARTiSAN Studio's repository-based architecture, directly implements the powerful data dictionary needed for the essential AV-2 view, and provides the perfect environment to create consistent architecture descriptions across the Operational (OV), Systems (SV) and Technical Views (TV).

Model items are defined once in the model and can be referenced on any diagram as either a symbol or rich text reference. Consequently any change to the model element is automatically propagated across all diagrams, ensuring architectural consistency and completeness.

New DoDAF explorer panes

The DoDAF profile adds new tabs to Studio's Explorer window for browsing DoDAF diagrams and elements. This eases navigation through DoDAF-specific model elements and their relationships.

All the visible browsers also appear in the context-menu 'Find' capability, unleashing the full power of ARTiSAN Studio's repository for navigation. You can change the displayed browsers in the view menu to optimize the user interface for your current task.

DoDAF diagram types

At the heart of the profile is a mapping from UML to DoDAF that allows you to capture information using DoDAF notation and diagrams. Using DoDAF diagramming, you are presented with diagram toolbars and behavior specific to the work product you're creating.

Textual views such as SV-9, TV-1 and TV-2, are supported by ARTiSAN Studio's existing Text Diagram which allows you to enter text directly with formatting and rich text references. You can also embed links to other documents (such as a Microsoft® Word documents or multimedia files).

The following work products are all supported:

All Views (AV)	AV-1, AV-2
Operational View (OV)	OV-1, OV-2, OV-3, OV-4, OV-5, OV-6a, OV-6b, OV-6c, OV-7
Systems View (SV)	SV-1, SV-2, SV-3, SV-4, SV-5, SV-6, SV-7, SV-8, SV-9, SV-10a, SV-10b, SV-10c, SV-11
Technical View (TV)	TV-1, TV-2

Derived matrix views and reports

Matrix views such as OV-4, SV-3 and SV-5 are generated as spreadsheets derived from information in other views. These are kept as 'live' documents, i.e. automatically generated in Excel® and synchronized with model information when needed.

Distribution of models

ARTiSAN Studio's web publisher is extremely flexible allowing you to create models that can be browsed in Internet Explorer. Alternatively export models via the XML Metadata Interchange Format (XMI), or produce Word documents using ARTiSAN's high quality Document Generator. Models, or parts of models, can be easily distributed between repositories with or without CM.

Open and extensible

You are not constrained to using the mapping provided by the ARTiSAN DoDAF Profile. By using the customizability features provided by ARTiSAN Studio, you can construct your own mapping (or even your own profile) for building DoDAF products. Extensibility features include in-model scripting, the ability to create new element and diagram types, and browsers.

INTERNATIONAL

Suite 701, Eagle Tower
Montpellier Drive
Cheltenham
GL50 1TA, UK
Phone: +44 (0)1242-229300
Fax : +44 (0)1242-229301
Email : info.uk@artisansw.com

Eupener Str. 135 - 137
50933 Cologne
Germany
Phone: +49-221-485-2260
Fax : +49-221-485-2261
Email : info.de@artisansw.com

THE AMERICAS

16055 SW Walker Rd, #422
Beaverton
OR 97006-4942
USA
US Toll Free: +1-888-511-7975
Phone: +1-503-245-6200
Fax : +1-503-296-2281
Email : info.us@artisansw.com

✓ Requires ARTiSAN Studio plus an additional DoDAF Profile license.

About ARTiSAN Software Tools

ARTiSAN is the leading supplier of collaborative modeling tools for requirements analysis, specification, design and development of complex applications. The company provides standards-based, multi-user tool support from architectural frameworks through systems design to software implementation. ARTiSAN offers products, services and a process for systems and software modeling to accelerate the development of next-generation real-time systems while ensuring that they always meet requirements. ARTiSAN enables engineering teams to visualize, design and validate systems before building them, and simplifies implementation with code generation and software reuse Winner of the 2005 SD Times 100 award in the Modeling category for bringing UML and SysML to real-time embedded systems, ARTiSAN offers the most advanced tools for complex applications development.

© 2005 ARTiSAN Software Tools.
All other trademarks used herein are the properties of their respective companies.

